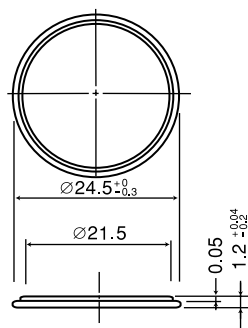


CR2412

■ Dimensions(mm)

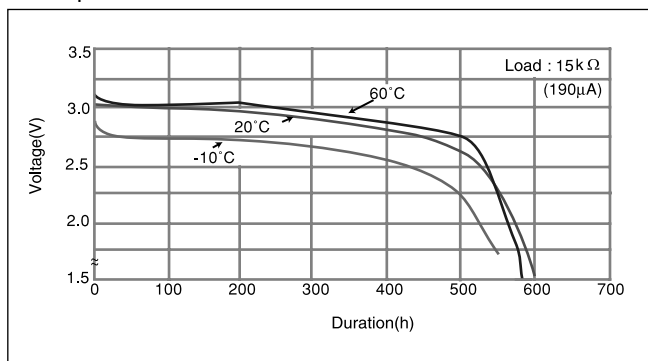


Weight: 2.0g

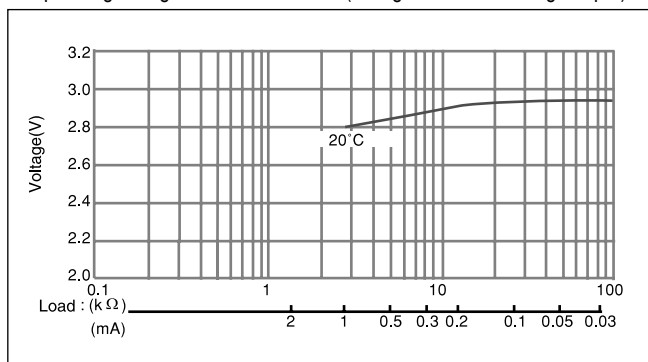
■ Specification

| | |
|------------------------------|-----------|
| Nominal voltage(V) | 3 |
| Nominal capacity(mAh) | 100 |
| Continuous standard load(mA) | 0.2 |
| Operating temperature(°C) | -30 ~ +60 |

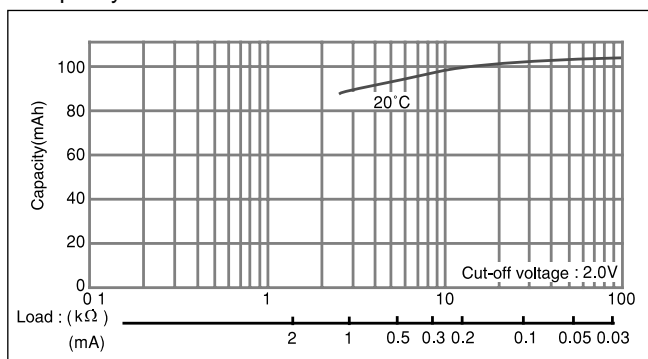
■ Temperature Characteristics



■ Operating voltage vs. load resistance(voltage at 50% discharge depth)

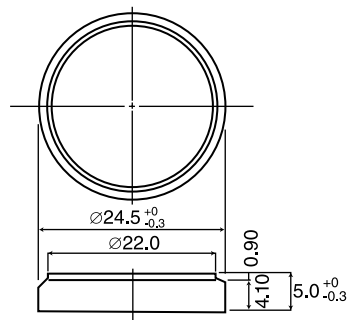


■ Capacity vs. load resistance



CR2450

■ Dimensions(mm)

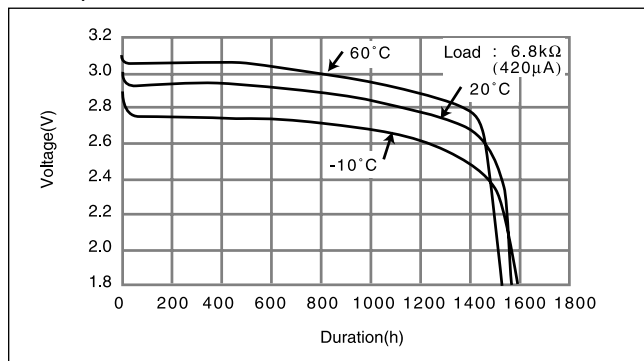


Weight: 6.3g

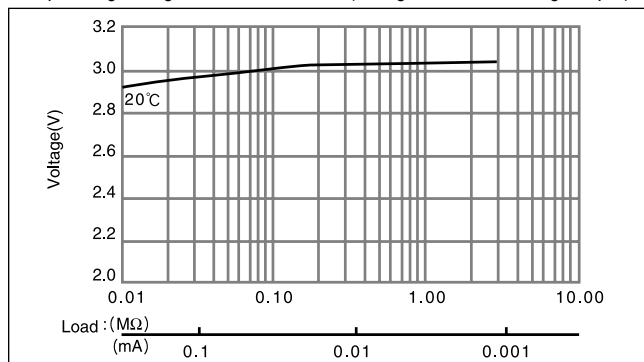
■ Specification

| | |
|------------------------------|-----------|
| Nominal voltage(V) | 3 |
| Nominal capacity(mAh) | 620 |
| Continuous standard load(mA) | 0.2 |
| Operating temperature(°C) | -30 ~ +60 |

■ Temperature Characteristics



■ Operating voltage vs. load resistance(voltage at 50% discharge depth)



■ Capacity vs. load resistance

